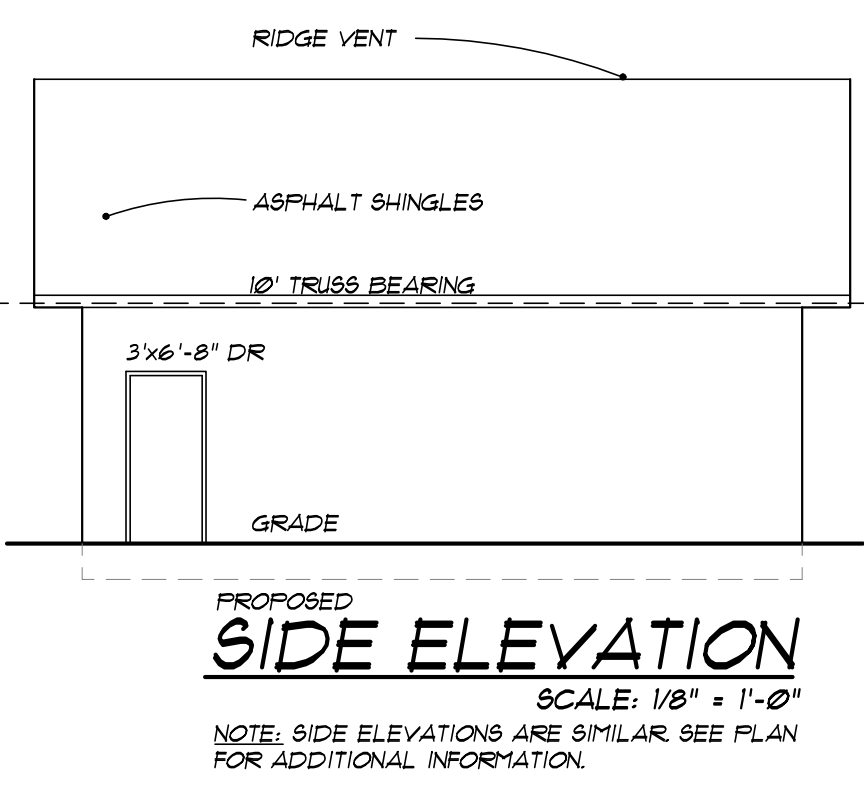
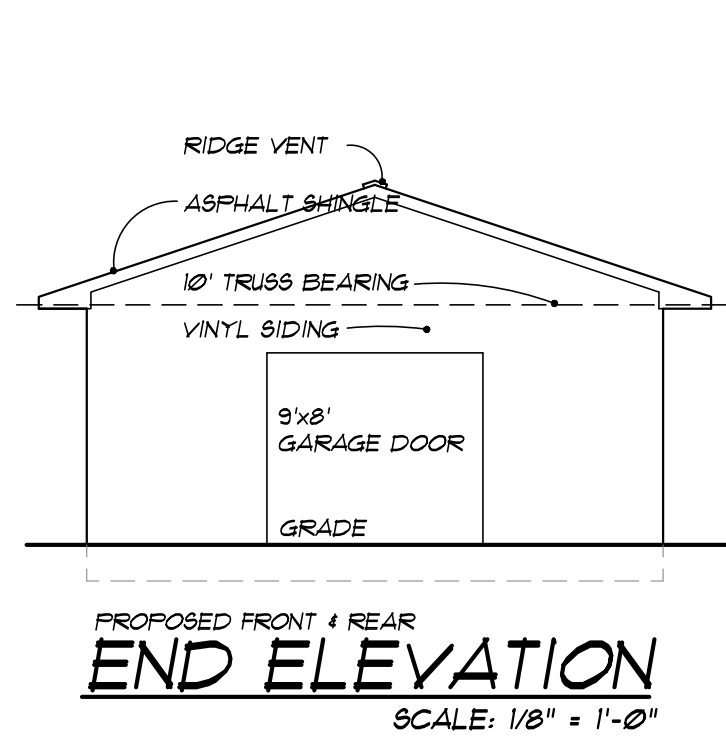


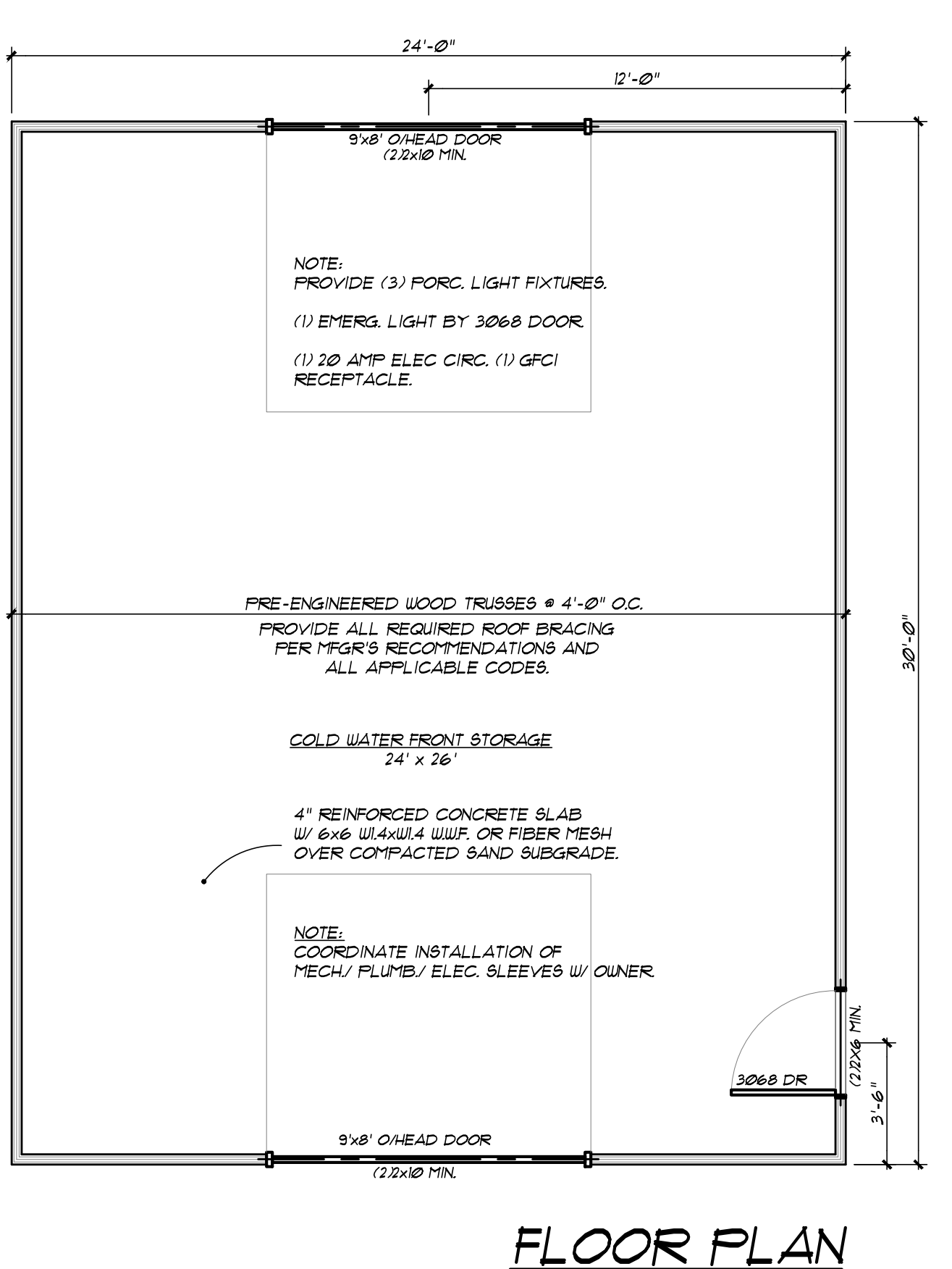
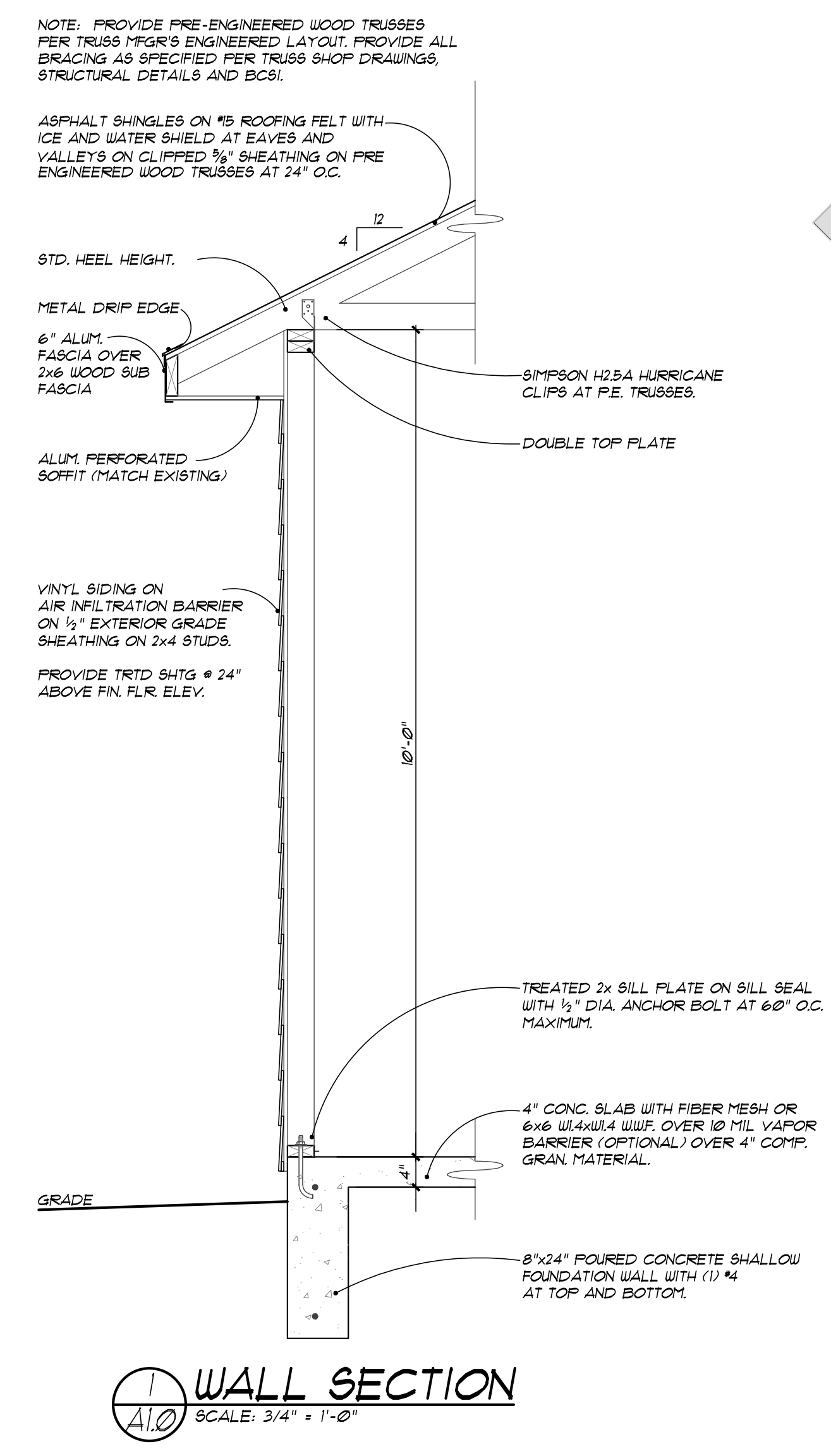
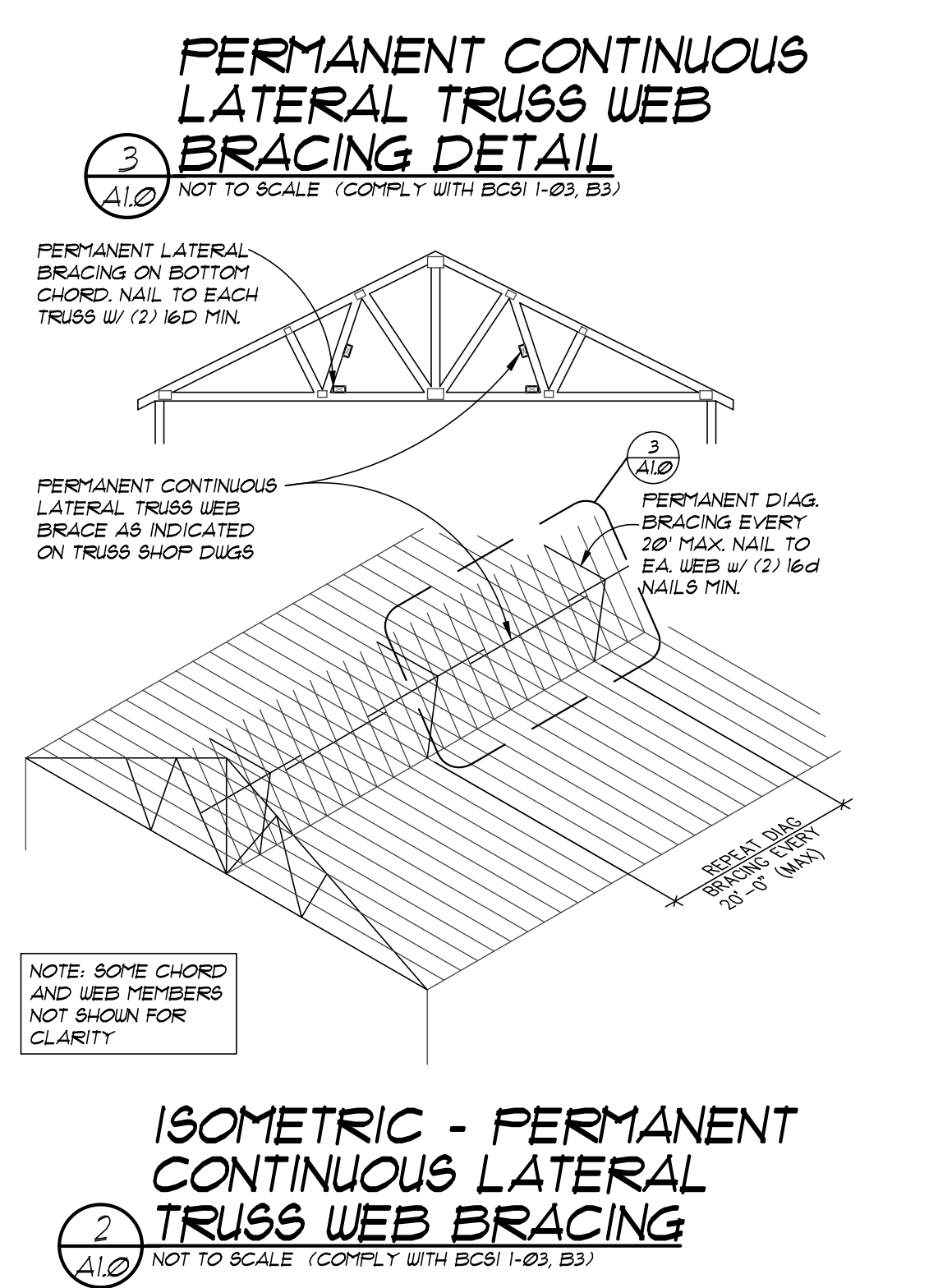
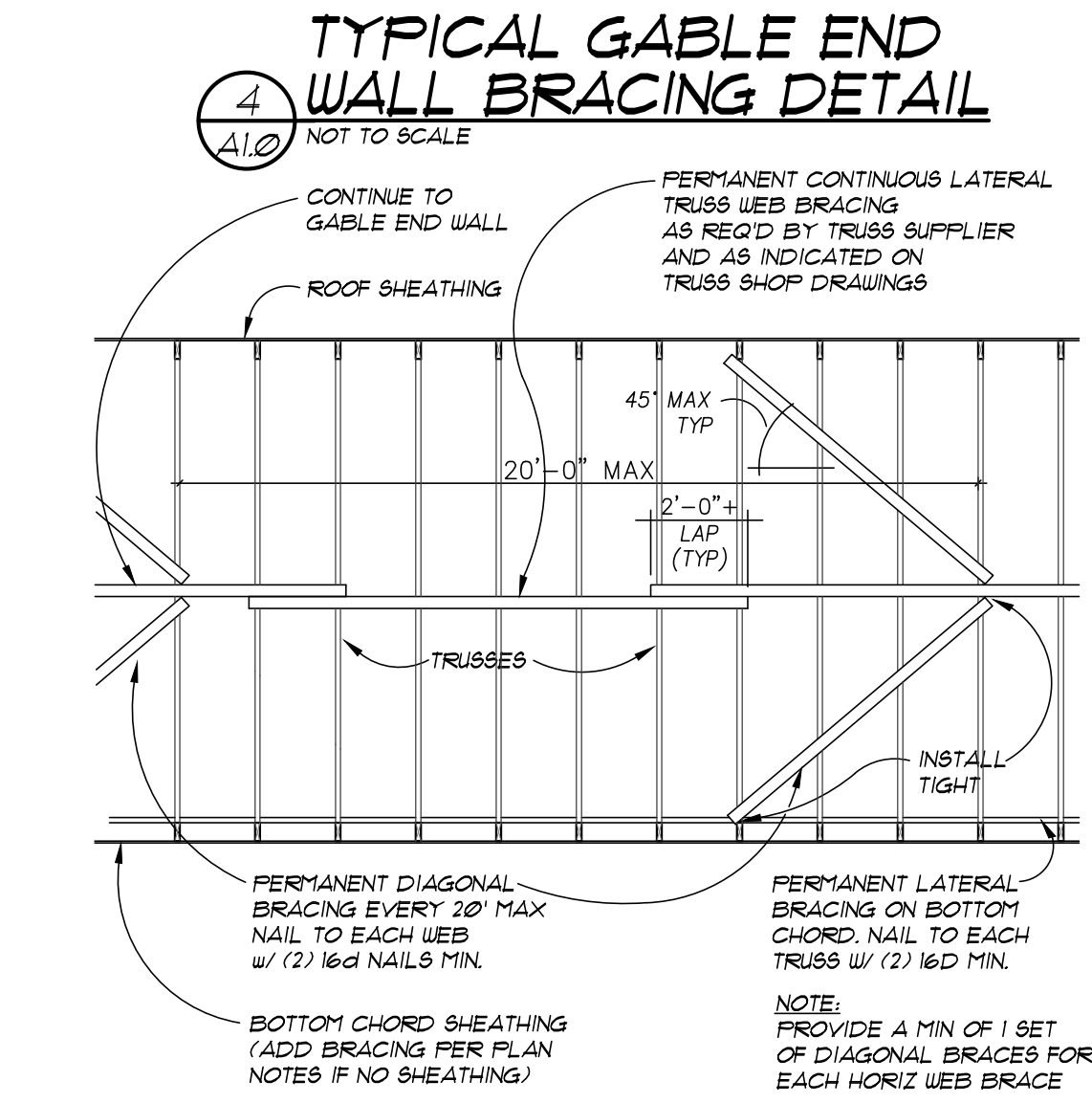
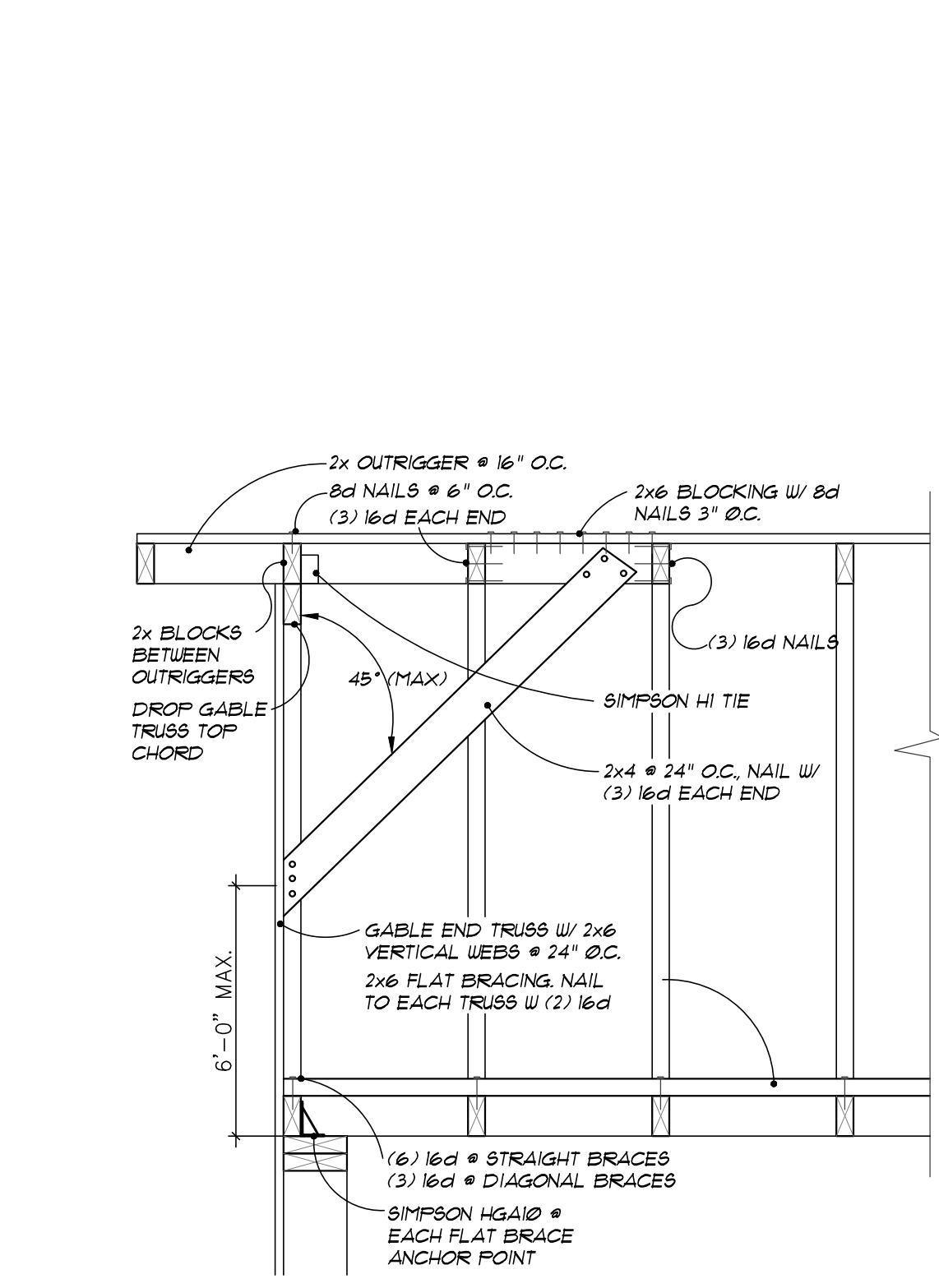


SITE PLAN
1" = 40'-0" NORTH

LEGAL DESCRIPTION:
THAT PART OF NE 1/4 OF SE 1/4 NOT INCLUDED IN BOULEVARD BEACH SUB-DIV #1 AS VACATED & EXC IDEASWAY PLAT BEING PART OF GOV'T LOT 2 IN SEC. 3 - 49N ACRES 7/4 - CO. SEC. 3 T1N R1W - C49N.



CODE DATA	
JURISDICTION:	STATE OF MICHIGAN BUREAU OF CONSTRUCTION CODES
CODE ENFORCED:	2015 MICHIGAN BUILDING CODE (MBC) 2015 MICHIGAN PLUMBING CODE (MPC) 2015 MICHIGAN MECHANICAL CODE (MPC) 2014 MICHIGAN ELECTRICAL CODE (NEC) NATIONAL ELECTRICAL CODE (NEC)
CONSTRUCTION TYPE: PROPOSED USE GROUP:	V8 NON-COMBUSTIBLE UNPROTECTED. (SECTION 602.5 MBC) S1 STORAGE. (SECTION 311 MBC)
ALLOWABLE AREA: ACTUAL AREA:	5,500 SF, TABLE 506.2 (WITHOUT ALLOWABLE INCREASES, 120 SF, PROPOSED).
ALLOWABLE HEIGHT: ACTUAL HEIGHT:	40'-0", 1 STORY, TABLES 504.3 & 504.4, 4'-14'-6", 1 STORY GRADE TO PEAK.
OCCUPANCY LOAD: (FOR EXITING ONLY):	120/300 = 24 + 3 PEOPLE
REQUIRED EXITS:	1 EXIT REQUIRED, OCCUPANT LOAD LESS THAN 28 PEOPLE, 180' TRAVEL DISTANCE ALLOWED, MBC TABLE 1006.2.1
PROVIDED EXITS:	1 EXIT, TRAVEL DISTANCE 4'-44'-0".
EMERGENCY LIGHTING:	REQUIRED, MBC 1008.
EXIT SIGNAGE:	NOT REQUIRED, EXCEPTION 1 MBC 103.1



INDEX OF DRAWINGS

A1.0	FLOOR PLAN, SCHEDULES, CODE DATA & INDEX
50.0	STRUCTURAL NOTES

ARCHITECTURE
CONSTRUCTION MANAGEMENT
DEVELOPMENT

1104 S. MITCHELL ST.
CADILLAC, MICHIGAN 49601
(231) 779-4002
(231) 779-4022 FAX

Proposed 24'x30' Water Front Cold Storage Building for: Cadillac Area Public Schools
Camp Torenta
730 S. Lake Dr., Cadillac, MI 49601

ARCHITECT OF RECORD:
S. Kleinsorge

DRAWN BY:
S. Kleinsorge

DATE ISSUED:
November 5, 2018 Construction Documents
November 12, 2018 Site Plan Approval

SHEET NUMBER:
A1.0

PROJECT NUMBER:
18156